



LED Video Wall

140° Ultra-Wide Viewing • Seamless Video Wall Integrator • Total Visual Coverage

LED Display Technology | Packaging Types

LED modules come in three main packaging types: COB, GOB, and SMD. Each offers distinct brightness and pixel density to meet diverse application needs.



SMD
Widely used, easy to repair, offers ideal flexibility for indoor installations.

GOB
Enhanced durability, impact resistant, waterproof, dustproof.

COB
Ultra-fine pitch, seamless look, superior color, ideal for conference and control rooms

Modular Design | Easy Maintenance

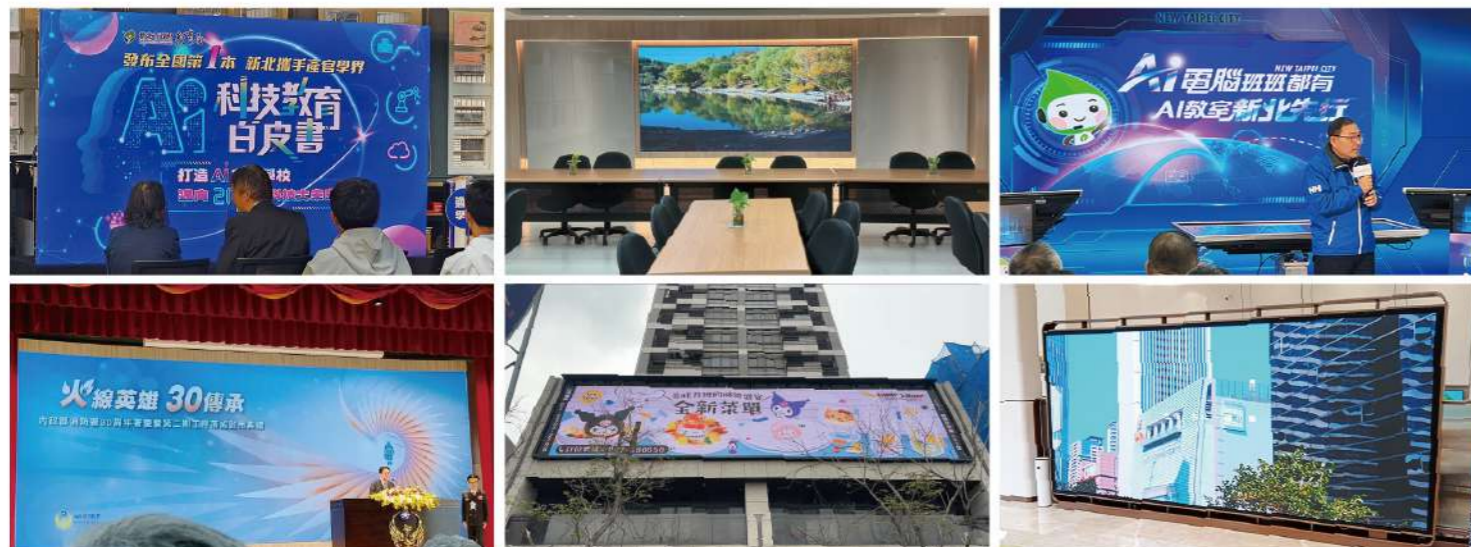
All core components such as modular power supply, receiving card, and display units allow for fast service, reduced downtime, and reliable long-term performance.

Next-Gen Technology | Visual Rendering

3840Hz refresh rate ensures smooth playback; ultra-high brightness, contrast, and color accuracy for immersive viewing.

LED Video Wall | Project Gallery

※ Custom sizes, pixel pitch, and quantity available on request



Installation | Maintenance Options

Front Access | Magnetic Module



Rear Access | Rental Cabinet Type



Indoor LEDP Series

Specifications	Indoor LEDP Series					
	LEDP1.25	LEDP1.53	LEDP1.86	LEDP2.0	LEDP2.5	LEDP3
Pixel Configuration	1R1G1B	1R1G1B	1R1G1B	1R1G1B	1R1G1B	1R1G1B
Pixel Pitch(mm)	1.25	1.53	1.86	2	2.5	3
Module Resolution	256*128	208*104	172*86	160*80	128*64	104*52
Module Size(mm)	320*160	320*160	320*160	320*160	320*160	320*160
Pixel Density(Dot/m ²)	640000	422500	288906	250000	160000	105625
Display Area(cd/m ²)	≥450	≥450	≥450	≥450	≥450	≥400
Viewing Angle(D)(°)	140					
Viewing Angle(H)(°)	130					
Gray Scale(Bits)	12~13					
Max. Power(W/m ²)	≤580	≤580	≤439	≤439	≤457	≤413
Avg. Power(W/m ²)	≤194	≤194	≤147	≤147	≤153	≤138
Input Voltage(V)	≥4.2					
Refresh Rate(Hz)	3840					
Frame Rate(Hz)	50&60					

Outdoor LEDOP Series

Specifications	Outdoor LEDOP Series	
	LEDOP4	LEDOP5
Pixel Configuration	1R1G1B	1R1G1B
Pixel Pitch(mm)	4	5
Module Resolution	80*40	64*32
Module Size(mm)	320*160	320*160
Pixel Density(Dot/m ²)	62500	40000
Display Area(cd/m ²)	≥4200	≥4200
Viewing Angle(D)(°)	140	
Viewing Angle(H)(°)	130	
Gray Scale(Bits)	14~15	
Max. Power(W/m ²)	≤909	≤836
Avg. Power(W/m ²)	≤303	≤279
Input Voltage(V)	≥4.2V	
Refresh Rate(Hz)	3840Hz	
Frame Rate(Hz)	50&60Hz	

